



# SW6000 User Manual

## CAA Customized Reports

User guide for the Shure SW6000 Conference Management System.  
Version: 9.2 (2021)

---

---

# Table of Contents

<b>1</b>	<b>Introduction .....</b>	<b>3</b>		
<b>2</b>	<b>Customized Reports.....</b>	<b>3</b>		
2.1	Copying of Files .....	3		
2.2	Report File structure.....	3		
2.3	Appearance in the CAA .....	4		
2.4	Naming the reports .....	4		
2.5	Report Label Numbers in CAA .....	5		

# 1 Introduction

The purpose of this document is to describe the how to install custom reports to SW6000.

## 2 Customized Reports

### 2.1 Copying of Files

Custom reports are released in a separate zip file and is not part of the SW6000 Installation Package. The reports must be copied to the correct folders.

The Conference Reports RDLC files must be copied to below CAA folder :

- *C:\Program Files (x86)\DIS\Conference Administrator Application\Reports\ConferenceLog*

The Voting Report RDLC files files must be copied to:

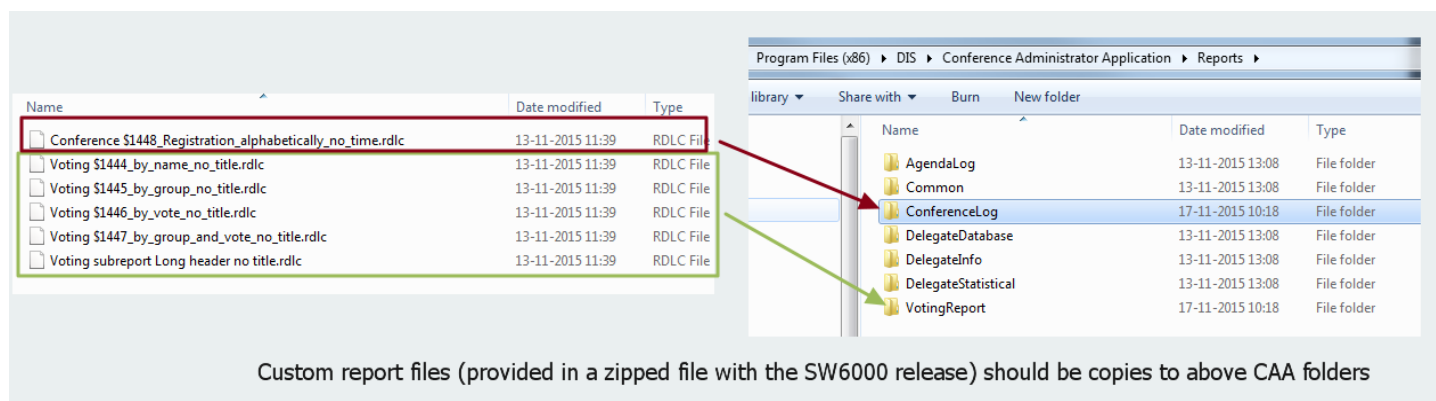
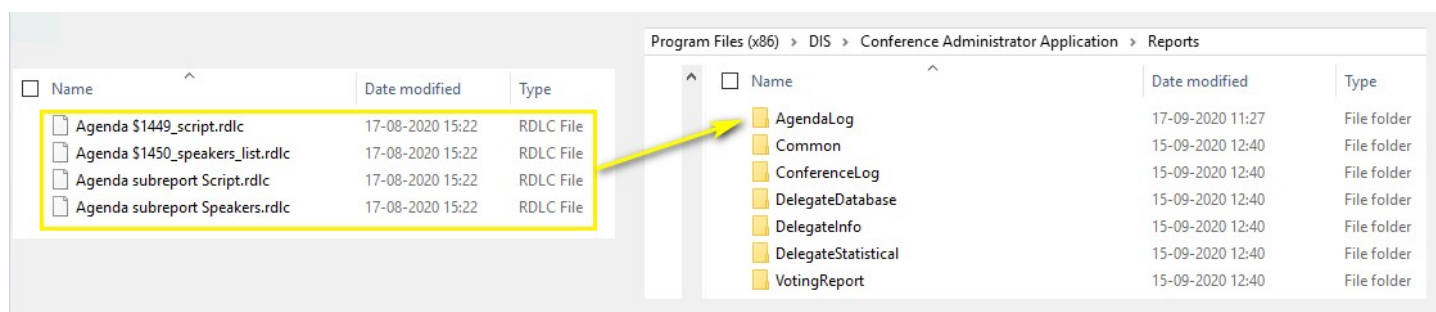
- *C:\Program Files (x86)\DIS\Conference Administrator Application\Reports\VotingReport*

The Agenda RDLC files files must be copied to:

- *C:\Program Files (x86)\DIS\Conference Administrator Application\Reports\AgendaLog*

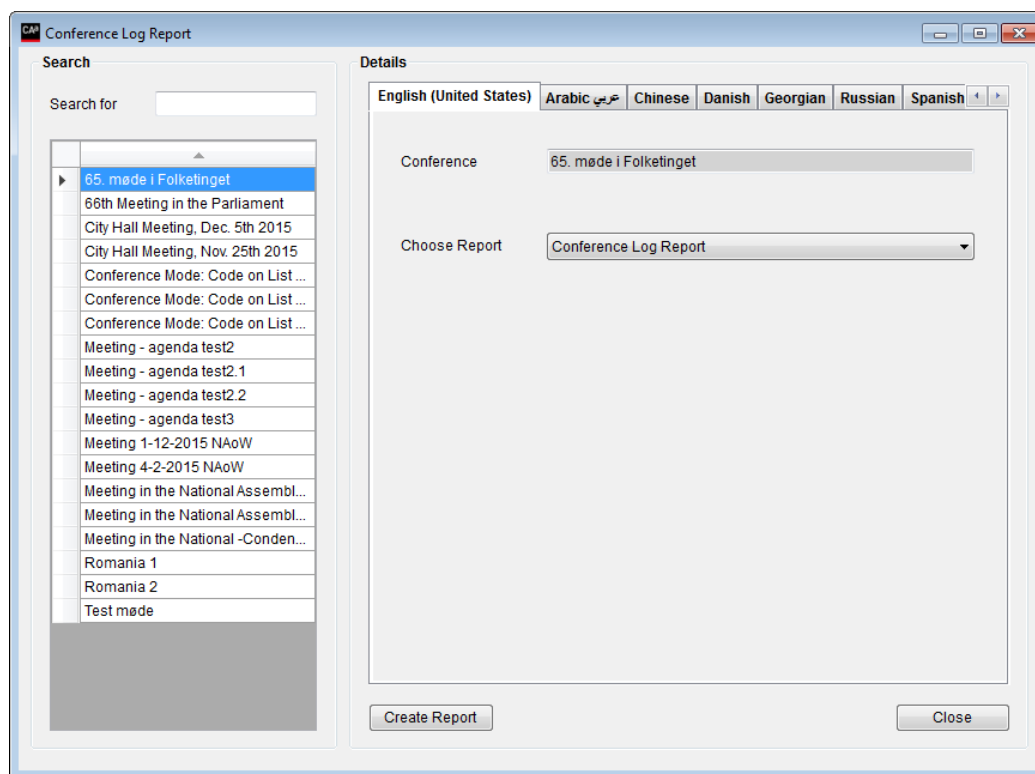
### 2.2 Report File structure

Examples of copying of files to the Report folders:



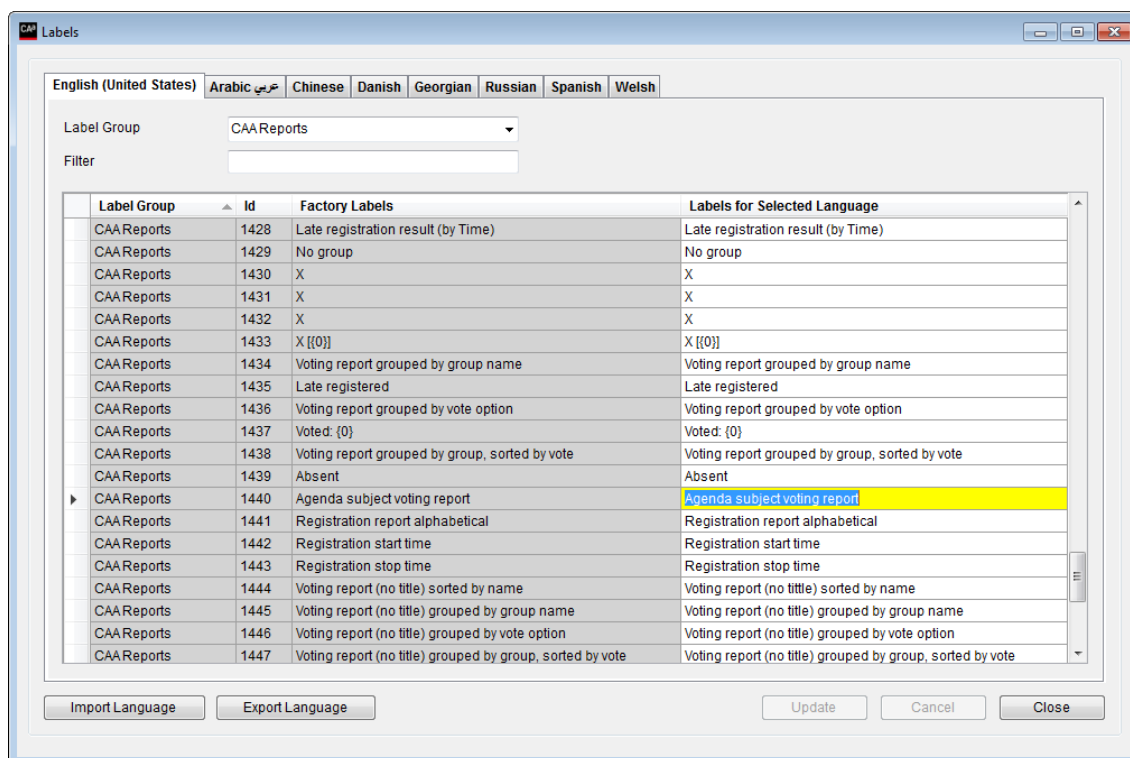
## 2.3 Appearance in the CAA

After copying the report files, the CAA can be started and the reports will appear in the CAA.



## 2.4 Naming the reports

All the reports can be renamed as required:



**Note:** The label number of the report correspond to number shown in the report file.

## 2.5 Report Label Numbers in CAA

To ease report testing and feedback, a command line parameter can be added for the CAA application which, when used, will include label numbers in both the CAA and in the PDF reports.

Example:

```
prjCAA.exe" -REPORTLABELID
```

**United States, Canada, Latin  
America, Caribbean:**

Shure Incorporated  
5800 West Touhy Avenue  
Niles, IL 60714-4608  
USA

Phone: +1 847 600 2000  
Fax: +1 847 600 1212 (USA)  
Fax: +1 847 600 6446  
Email: [info@shure.com](mailto:info@shure.com)

**Europe, Middle East, Africa:**

Shure Europe GmbH  
Jakob-Dieffenbacher-Str. 12  
75031 Eppingen  
Germany

Phone: +49 (0) 7262-9249-100  
Fax: +49 (0) 7262-9249-114  
Email: [info@shure.de](mailto:info@shure.de)

**Asia, Pacific:**

Shure Asia Limited  
22/F, 625 King's Road  
North Point, Island East,  
Hong Kong

Phone: (+852) 2893-4290  
Fax: (+852) 2893-4055  
Email: [info@shure.com.hk](mailto:info@shure.com.hk)