

The Shure logo is located in the top right corner. It consists of the word "SHURE" in a bold, italicized, sans-serif font, colored in a bright lime green. The text is set against a black, rounded rectangular background that has a slight perspective, appearing to be a sticker or a badge.

SHURE

MXCSIGN

App

User Guide for Shure MXCSIGN App

Version: 1 (2021)

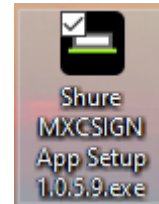
1 Introduction

The MXCSIGN App is an application used to send images to Shure MXCSIGN electronic sign. The MXCSIGN is a two-sided e-paper display that provides easily readable names, titles, text, or images in conferences and panel discussions.

2 Installation

Download the MXCSIGN application from the Shure download web site.

Unzip the software and run the setup file.



3 Compatibility

The MXCSIGN software support installation on a computer with the following operating system:

- WIN 10

The firmware on the MXCSIGN must be MXC_FW_Release_9.2.0 or later to work with the MXCSIGN app.

4 Image

The image should be created in a graphic design program with an image size of 1900x460 pixels. Larger images will be cropped when transferred to the MXCSIGN.

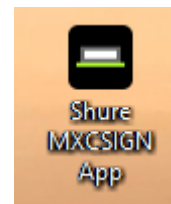
The format of the image can be any standard image format such as:

- BMP
- JPEG
- TIFF
- PNG

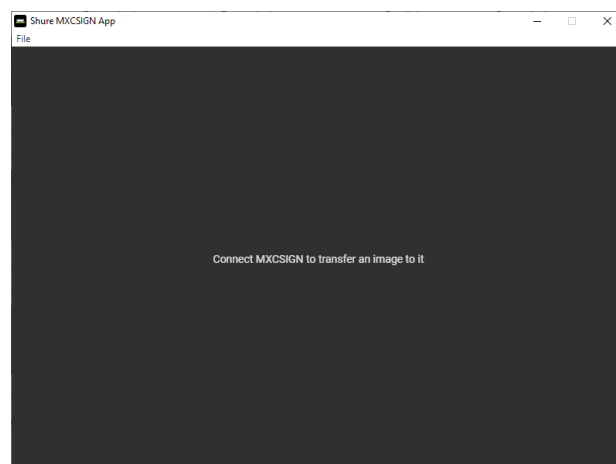
When transferred to the MXCSIGN the image is converted to a monochrome picture (4 bit grey scale – 16 grey levels).

5 Using the Application

1. Open the application by clicking the program shortcut.



2. The application will open with a message to connect a MXCSIGN.

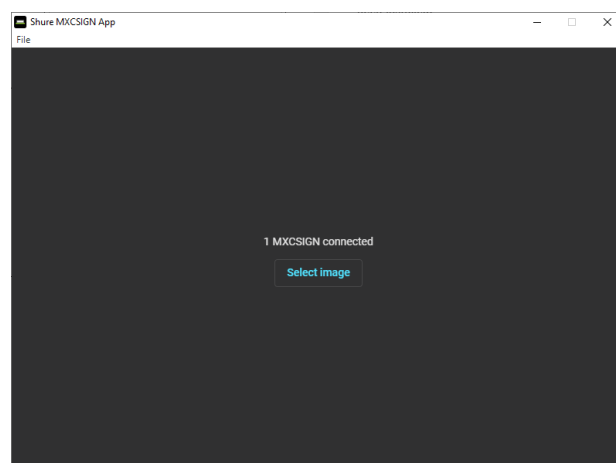


3. Connect the MXCSIGN using the USB-B micro connector to a USB port on the PC.

A message that the sign is connected is shown.

Click 'Select image'

Note: It will take about 35 seconds for the MXCSIGN to power up.



Multiple signs can be connected simultaneously by connecting MXCSIGN's to additional ports on the PC or using a powered USB hub.

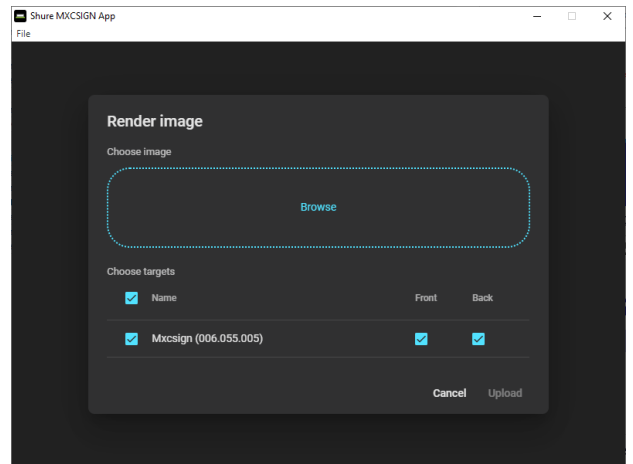
Important: Some USB charge ports (ports with battery symbol) implement a timeout that power cycles the USB port if no communication is detected.

In this case the MXCSIGN is not able to boot up in time to initiate communication before the charge port times out.

The MXCSIGN works fine when connected to charge ports where a timeout is not implemented.

- Select 'Browse' in the 'Choose image' field.

A standard browser window will open and an image can be selected.



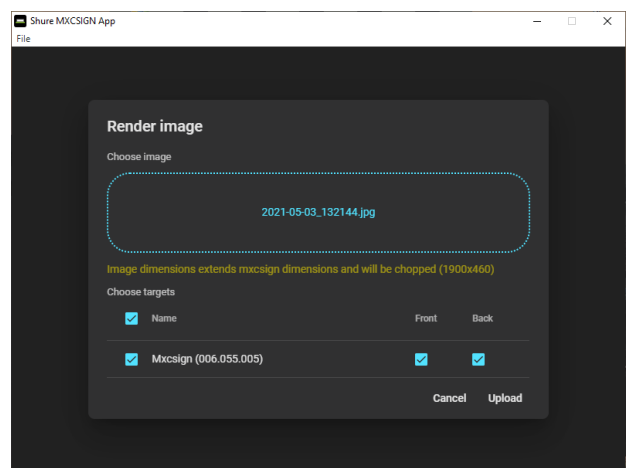
- The name of the chosen image is shown in the 'Choose image' field.

The MXCSIGN image dimensions are 1900x460 pixels; larger images will be cropped.

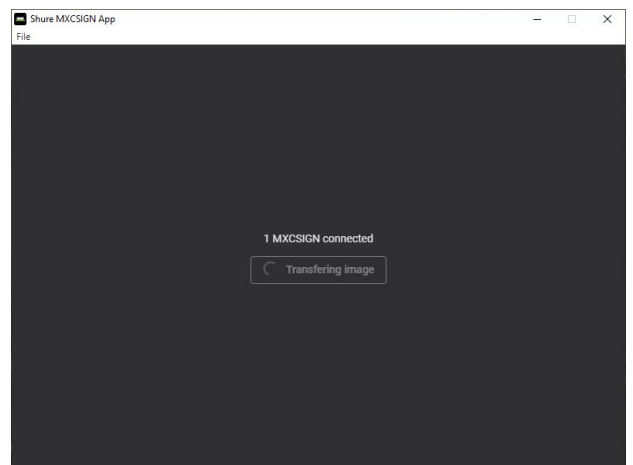
If the image chosen is smaller, the image is aligned to the upper left corner of the sign.

The chosen image can be transferred to one or both sides of one or more MXCSIGN's.

Select 'Front' and/or 'Back' and select 'Upload'.



- The image is transferred to the sign.



- When the transfer is completed a new image can be selected.

